

**Biotin Anti-Mouse CD90.2 (Thy-1.2) Monoclonal Antibody**

天津三箭生物技术股份有限公司  
Tianjin Sungene Biotech Co., Ltd.  
精准 高效 稳定 Precision Efficient Stable

| Catalog Number | Vial Size |
|----------------|-----------|
| M10902-08B     | 50 µg     |
| M10902-08E     | 500 µg    |

|                |   |
|----------------|---|
| <b>Market</b>  | 400-621-0003<br>marketing@sungenebiotech.com        |
| <b>Support</b> | 022-66211636-8024<br>techsupport@sungenebiotech.com |
| <b>Web</b>     | www.sungenebiotech.com                              |

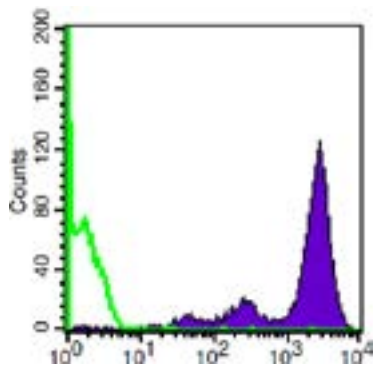
**Important Note:** Centrifuge before opening to ensure complete recovery of vial contents.  
This product is guaranteed up to one year from purchase.

**Purified Antibody Characterization**

| Clone | Isotype   | Reactivity |
|-------|-----------|------------|
| 30H12 | Rat IgG2b | Mouse      |

**Description**

CD90.2 is a 25-35 kD immunoglobulin superfamily member also known as Thy1.2. It is expressed on hematopoietic stem cells and neurons, all thymocytes, and peripheral T cells in Thy1.2 bearing mouse strains (Balb/c, CBA/J, C3H/He, C57BL/-, DBA, NZB/-). CD90.2 is a glycosylphosphatidylinositol (GPI)-anchored membrane glycoprotein involved in signal transduction. CD90.2 is involved in costimulation of lymphocyte proliferation and induction of hematopoietic stem cells differentiation. CD90.2 has been shown to interact with CD45. The 30H12 antibody has been reported to induce Ca<sup>2+</sup> flux in thymocytes and, in combination with antibody against the CD3/TCR complex, promote thymocyte apoptosis and inhibit CD3-mediated proliferative responses of mature T lymphocytes.

**Illustration of Immunofluorescent Staining****Log Fluorescence Intensity**

C57BL/6 mouse thymocytes stained with  
Biotin anti-mouse CD90.2, followed by PE-SA

**Product Information**

**Conjugation:** Biotin

**Formulation:** PBS pH 7.2, 0.09% NaN<sub>3</sub>,  
0.2% BSA

**Concentration:** 0.5 mg/ml

**Storage:** Keep as concentrated solution.  
Store at 4°C and protected from prolonged  
exposure to light. **Do not freeze.**

**Application:** Recommended Application: FC

**Usage:** Each lot of this antibody is quality  
control tested by immunofluorescent staining  
with flow cytometric analysis (The amount of  
the reagent is suggested to be used ≤ 0.25  
µg /10<sup>6</sup> cells in 100 µl). Since applications  
vary, the appropriate dilutions must be  
determined for individual use.

**References**

- [1] Barclay A, et al. 1997. The Leukocyte Antigen FactsBook Academic Press.
- [2] Craig W, et al. 1993. J. Exp. Med. 177:1331.
- [3] Reif AE and Schlesinger M. 1989. Cell Surface Antigen Thy-1.
- [4] Mayani H, et al. 1994. Blood 83:2410.

**For Research Use Only.**